

# ADM-H220 Horizontal Form Fill Seal



## Premade Pouch Packaging

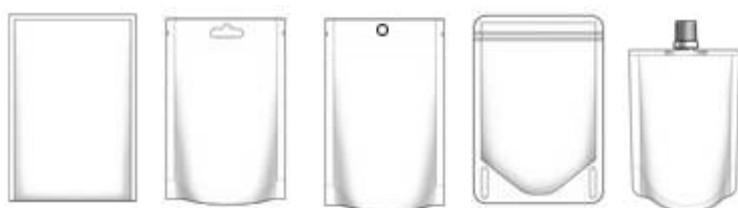
The ADM HFFS bag making machine offers high speed packaging solutions for pouch bags. The unwound film travels through a series of stations to form a neat pouch before sealing and cutting and separating the made up bags. The next series of process bag open, blow open, open bag check, filling, nitrogen gas option, close and seal stations. The synchronised process offers a fast accurate and consistent performance in packaging.

## Features

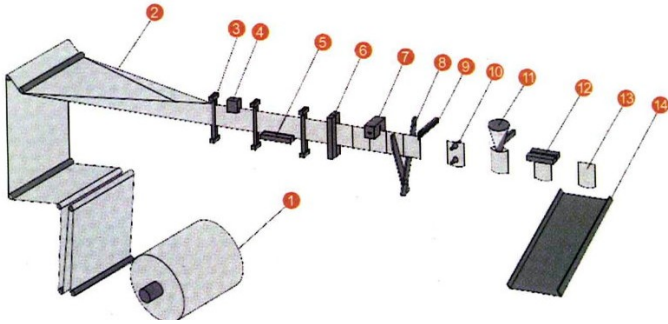
- Stainless steel construction, 304 Grade
- New frame design
- All parts aluminium are anodised
- Allen Bradley technology used for PLC& HMI
- Allen Bradley Kinetic servo drivers and motors
- Omron, Sunx and Sick sensors
- Schneider switches, push buttons, pilot lamps
- Festo and SMC pneumatics
- Phoenix terminals
- Full safety guarding standards
- CE approved electrical

## Option

- Zip attachment system
- Easy tear notch
- Euro/ hole punch
- Gas flush assembly
- Corner notching tools
- Custom pattern cutting knife
- Custom pattern sealing jaws

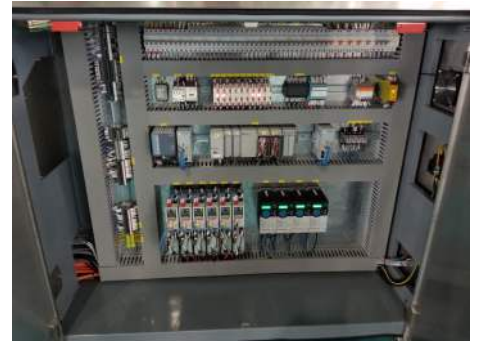


Model	ADM-H220
Bag type: Pre-made	Doy, & flat pouches with zip option
Bag Size	90-200(W) x 140-280(H) x up to 50(D)
Reel Dia x Length x core	550x660x74
Speed	Up to 70 BPM
Power Supply	415V 50Hz 9.5kW
Air Pressure	0.6-1.2m <sup>3</sup> /min 0.6MPa
Noise Level	<80dB
Weight	5200kg
Machine Dimension (LxWxH)	7760x1450x1945



#### Mechanical Feature

- Bag blower includes 2 sensors to check bags open correctly
- No Pouch no fill
- Shaker system to settle bags (option)
- Feed cone blockage detect sensor to trigger alarm (option)
- An inkjet printer is mounted inline with bag dispenser
- 2 filling stations available for product mixing
- Linear guide sealing and cutting adjustment
- ISO parts, off the shelf
- Easy access for service



#### Electrical Feature

- Allen Bradley Compact Logix PLC
- 6 servo drivers and motors
- 4 VSD drive and motors
- One servo drive for top bag clamping beam
- One servo drive for lower bag clamping beam
- One servo drive for lower beam transfer
- Automatic oil lubrication system
- Control panel neatly layed out and fully detailed
- Easy access for service



Innovation in Flexible Packaging

#### ADM Packaging Automation P/L

3 Kerr Street, Preston, Vic, 3072, Australia

Ph: 03 9484 8791 Fax: 03 9484 7506

Email: [info@admpa.com.au](mailto:info@admpa.com.au) Website: [www.admpa.com.au](http://www.admpa.com.au)